

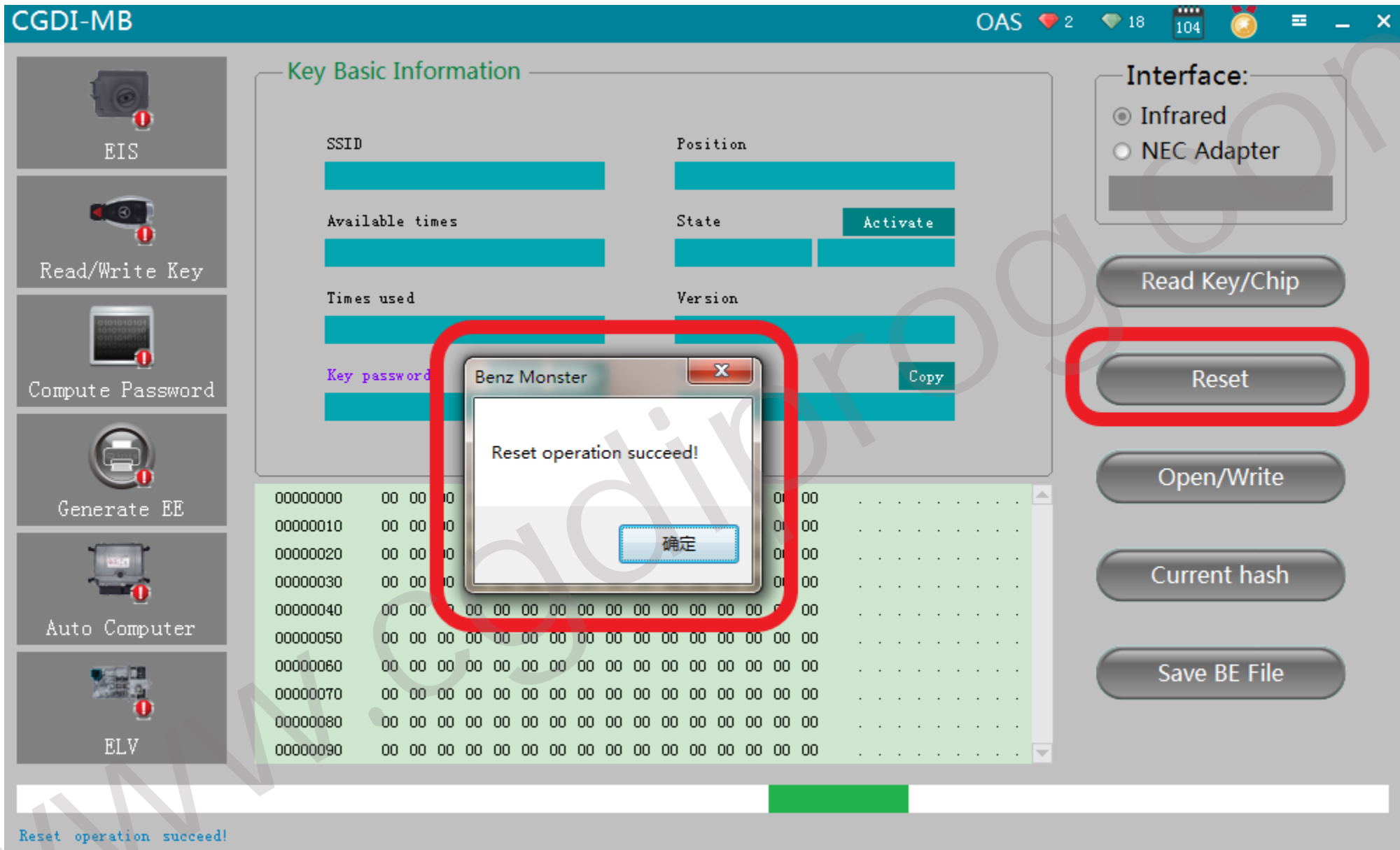


**Write the original key
by infrared**

CG-MB



Please insert the new key into CG-MB device



Click "reset", erase key



EIS



Read/Write Key



Compute Password



Generate EE



Auto Computer



ELV

Key Basic Information

SSID

Position

Available times

State

Activate

Time

Key

```
00000000
00000010
00000020
00000030
00000040 00 00 00 00 00 00 00 00 00 00 00 00 00 00 00
00000050 00 00 00 00 00 00 00 00 00 00 00 00 00 00
00000060 00 00 00 00 00 00 00 00 00 00 00 00 00
00000070 00 00 00 00 00 00 00 00 00 00 00 00 00
00000080 00 00 00 00 00 00 00 00 00 00 00 00 00
00000090 00 00 00 00 00 00 00 00 00 00 00 00 00
```

Please Note

Smart key please choose 41 format, common key and BE key please choose 51 format!

When writing the original key, please make sure that it is wiped by the CGMB, otherwise the write will fail!

OK

Interface:

- Infrared
 NEC Adapter

Read Key/Chip

Reset

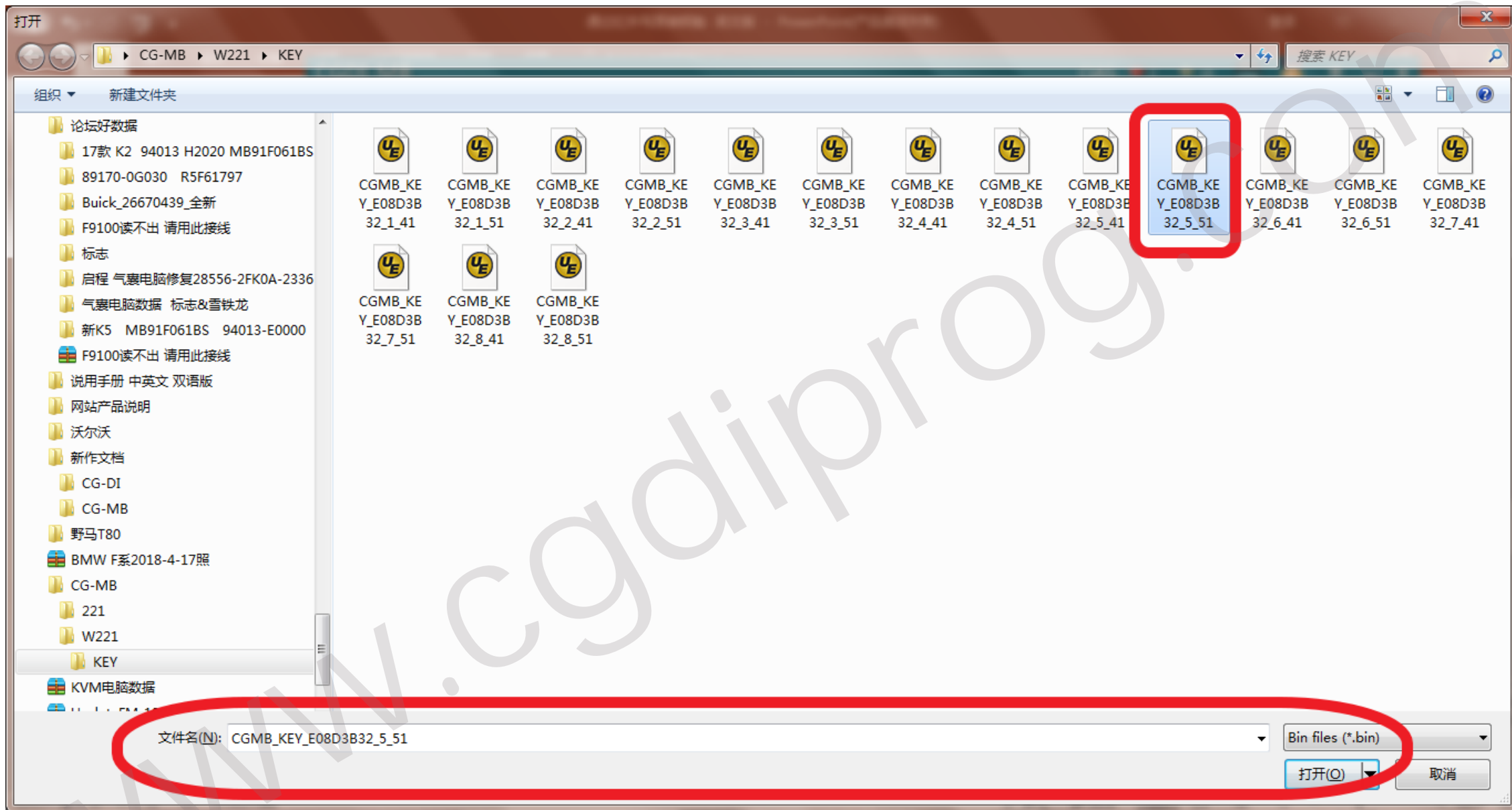
Open/Write

Current hash

Save BE File

Reset operation succeed!

Click "open/write", and note the prompt



Choose—unused key position data, click and open it

- EIS
- Read/Write Key
- Compute Password
- Generate EE
- Auto Computer
- ELV

Key Basic Information

SSID	Position
Available times	State Activate
Times used	Version
Key password	Copy

Interface:

- Infrared
- NEC Adapter

- Read Key/Chip
- Reset
- Open/Write
- Current hash
- Save BE File

00000000	01 15 32 0	2 56 B U . . .
00000010	16 D9 3C C	8 F CF	. . . 1 m h .
00000020	7E 3E 02 1	9 7 5F	~ > H .
00000030	59 1A 50 C	5 B 2F	Y . P
00000040	3E 77 25 2	8 EC	> w % (. v .
00000050	F0 48 1E 15 72 8F 7E ED 2E 47 86 4E 7C	2 FE	. H r .
00000060	75 F2 D8 11 C4 B9 2B 78 9E 7F FF FF FF FF FF FF		u + x .
00000070	FF FF FF D6 A1 7F 44 D2 1B 13 12 7F FF 00 00 02	 D .
00000080	FF FF FF FF FF FF FF 7C 90 55 89 E4 8D 3B 32	
00000090	01 01 01 01 FF FF FF FF 73 0C FF FF FF FF 04 FC	 s

Benz Monster

Write success!

确定

Write success!

Write success



Get on car to learn it